

 Mercedes-Benz

 UCI

MOUNTAIN BIKE
WORLD CUP

VAL DI SOLE - TRENTO
ITALY



TEAM MANAGERS INFORMATION

MERCEDES-BENZ UCI MTB WORLD CUP – 02-04 September – VAL DI SOLE (ITA)



Unity. Passion. Integrity. Excellence.

1

INTRODUCTION



Unity. Passion. Integrity. Excellence.



INTRODUCTION

PRESENTERS

- **BURNEY Simon** (GBR)
UCI MTB Coordinator
- **SACCO Fabio** (ITA)
LOC – Organizing Committee
- **BATTISTINI Sergio** (CAN)
LOC – Event Race Director
- **PRONOVOST Nathalie** (CAN)
President of the Commissaires' Panel
- **WABEL Beat** (SUI)
UCI Technical Delegate

2

XCC INFORMATION



XCC INFORMATION

SCHEDULE



- **Friday, 02 September**

17:30	World Cup Cross-country Short Track – Women
18:15	World Cup Cross-country Short Track - Men

XCC INFORMATION

COURSE CONFIGURATION



Lap : 0.950 km

XCC INFORMATION

RACE PROCEDURES



➤ Start order

- Riders rank in the top 16 of the most recently published XCO world cup standings
- As per the most recently published UCI XCO individual ranking.

➤ Tech zone

- Only Tech support is allowed. No Feeding.

➤ Body back number

- To ensure good visibility for the photo finish, body numbers must be placed on the **LEFT**

XCC INFORMATION

RACE PROCEDURES



➤ **Bike marking**

- A reminder that the same bike (frame) must be used for both XCC & XCO races during a World Cup weekend.
- All frames will be marked during rider call-up & checked before the start of the XCO.
- If for reasons of breakage a rider needs to use a different frame for the XCO race they must present the damaged frame to the PCP, along with the replacement frame to be marked.

➤ **Tyre size**

- A reminder that the minimum tyre width for the XCC race is 45mm. Tyres will be checked during call-up and anyone found with a tyre under this size will not be allowed to start the XCC.

XCC INFORMATION

RACE CONFIGURATION - WOMEN

Transpondeurs pick up <i>(at the tent close to the boxes)</i>	from 16:00 to 17:00
Boxes closing time	17:20
Start	17:30
Number of laps	announced after the first lap
Podium	Top 3 Flower ceremony leader jersey presentation The first three in the overall UCI Mountain Bike Short Track World Cup on the podium

XCC INFORMATION

RACE CONFIGURATION - MEN



Transpondeurs pick up <i>(at the tent close to the boxes)</i>	from 16:45 to 17:45
Boxes closing time	18:05
Start	18:15
Number of laps	announced after the first lap
Podium	Top 3 Flower ceremony leader jersey presentation The first three in the overall UCI Mountain Bike Short Track World Cup on the podium

3

XCO INFORMATION



Unity. Passion. Integrity. Excellence.



XCO INFORMATION

SCHEDULE



- **Sunday, 04 September**

08:30	World Cup Cross-country Olympic - Women Under 23	
10:15	World Cup Cross-country Olympic - Men Under 23	
12:20	World Cup Cross-country Olympic - Women Elite	Followed by Awards (WU/MU)
14:50	World Cup Cross-country Olympic - Men Elite	Followed by Awards (WE/ME)

XCO INFORMATION

COURSE CONFIGURATION



- Lap : 2.0 km
- Lap : 4.0 km
- ITP 1 : at MP18
- ITP 2 : between MP30 & MP31

XCO INFORMATION

RACE CONFIGURATION – WOMEN UNDER 23



Transpondeurs pick up <i>(at the tent close to the boxes)</i>	from 07:00 to 08:00
Boxes closing time	08:15 <i>(15 min before the start)</i>
Start	08:30
Number of laps	1 start loop + 4 laps
Podium	Top 3 The first three in the overall UCI Mountain Bike World Cup

XCO INFORMATION

RACE CONFIGURATION – MEN UNDER 23



Transpondeurs pick up <i>(at the tent close to the boxes)</i>	from 08:45 to 09:45
Boxes closing time	10:00 <i>(15 min before the start)</i>
Start	10:15
Number of laps	1 start loop + 5 laps
Podium	Top 3 The first three in the overall UCI Mountain Bike World Cup

XCO INFORMATION

RACE CONFIGURATION – WOMEN ELITE



Transpondeurs pick up <i>(at the tent close to the boxes)</i>	from 10:50 to 11:50
Boxes closing time	12:05 <i>(15 min before the start)</i>
Start	12:20
Number of laps	1 start loop + 5 laps
Podium	Top 5 The first five in the overall UCI Mountain Bike World Cup Team of the day Winning Team in the Team World Cup standings

XCO INFORMATION

RACE CONFIGURATION – MEN ELITE



Transpondeurs pick up <i>(at the tent close to the boxes)</i>	from 13:20 to 14:20
Boxes closing time	14:35 <i>(15 min before the start)</i>
Start	14:50
Number of laps	1 start loop + 6 laps
Podium	Top 5 The first five in the overall UCI Mountain Bike World Cup Team of the day Winning Team in the Team World Cup standings

XCO INFORMATION

RACE PROCEDURES



➤ Top-24 World Cup Standings

- Top-24 in World Cup standings will pick up new XCO number with transponder.
(do not race with 'training' number issued at rider confirmation or with XCC number)

➤ 80%

- In effect for all events
- Located 100m before the finish line

XCO INFORMATION

RACE PROCEDURES



➤ Start

- PCP will give the start with lights (*on the finish arch and in front of the first line*).



XCO INFORMATION

FEED & TECH ZONE

- One double feed & tech zone
- Access only with feed & tech zone pass

4

GENERAL INFORMATION



Unity. Passion. Integrity. Excellence.



GENERAL INFORMATION

XC TRAINING INFORMATION



- A strict reminder that training on the XCO course is not permitted outside of official training times once the event official UCI schedule starts. Before the UCI schedule starts, the opportunity to train on the course is solely the decision of the event organisers who base their decision on land ownership, insurance, & liability in case of an accident or injury.
- Outside of official training television and organisation do a lot of work on the course and also need the course to access camera positions and riders training interfere with this work and can cause accidents.
- If a rider is recognized training outside of official training times they will be sanctioned (fine) for a first offence, a second offence in the same season will result in a DSQ

GENERAL INFORMATION

RULES REMINDER



- Cutting, wrapping, folding and/or any modification of number plates is **NOT allowed unless approved by the PCP** (*art. 1.3.076*)
- No camera during races (*unless requested by TV*)
- Any rider who competed in the XCC must use the same bike for the XCO

GENERAL INFORMATION

TECHNOLOGICAL FRAUD – X-RAY CONTROLS



- X-ray controls might be carried out during the competition
- When : X-ray controls are carried out after the race for selected riders
- *A control commonly takes 5 minutes*



GENERAL INFORMATION

TEAM VIDEOGRAPHER



GENERAL INFORMATION

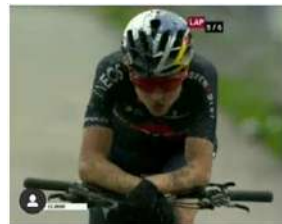
RIDER POSITION ON BIKE



1.3.008: The rider shall normally assume a sitting position on the bicycle. This position requires that the only points of support are the following: the feet on the pedals, the hands on the handlebars and the seat on the saddle

The situation in mountain bike is significantly different to the Road but the spotlight is on the conduct of all riders, so please be aware we will enforce the following points:

- Riding with hands on the fork crown of the bike and not on the handlebars is forbidden and will be strictly enforced.
- Riding with forearms on the handlebars will be tolerated provided the rider is not riding in a group and the hands do not obscure the number plate.



GENERAL INFORMATION

PRIZE MONEY

- **< 1 999€** : Paid at the “**OC Office**” in cash
(main building at second floor)
(from 30 minutes until 1h30 after the race)
- **> 2 000 €** : Paid by bank transfer
The paper to fill out will be available at the “OC Office”

5

MEDICAL



Unity. Passion. Integrity. Excellence.



MEDICAL

EMERGENCY CONTACT DETAILS



- Please ask your riders to write their “***emergency contact details***” behind their body number (see picture).

NAME:
EMERGENCY CONTACT DETAILS:
MEDICATION:
ALLERGIES AND EXISTING MEDICAL CONDITIONS:

MEDICAL

GENERAL INFORMATION



- Head of Medical : Dr **VOLONTE Fabio** (+39 346 695 54 00)
- Operation Manager : Nurse **GEBELIN Daniele** (+39 339 626 66 82)

- **Medical resources along the course:**
 - 32 Marshals XCO
 - 2 Emergency nurses
 - 5 team rescuers (PHTC + DAE)
 - 10 Mountain rescuers (Fireman and alpin rescuers)
 - 2 equipped helicopter landing pads
 - 1 Ambulance vehicles (to the first aid room)
 - 1 Ambulance emergency (to the first aid room)
 - 1 mountain rescue car
 - Direct radio connection to the state control center in the first aid room

MEDICAL

GENERAL INFORMATION



- **Operating times** (average):
 - Marshall → Injured person 30 sec. to the radio message
 - Paramedic → Injured person from 30 sec to 3 min
 - Nurses → Injured person from 30 sec to 3 min
 - Head of Medical -> injured person 8 min
 - Operation manager -> injured person 8 min
 - Emergency doctor → Injured person 8 min
 - Rescue helicopter→ Place of operation from 8 to 14 min

- **Transportation:**
 - Ambulance vehicle → Advanced medical post from 4 to 10 min
 - Rescue helicopter → Hospital 10 min
 - Ambulance vehicle → Hospital 20 min

MEDICAL

GENERAL INFORMATION



- **Procedure of an operation:**
 - Marshall radios to head of operations
 - Operations manager sends mountain rescue and rescues and nurses to the casualty
 - Primary care by rescues and nurses and doctor
 - In the case of seriously injured person, the operation manager are immediately called of rescue helicopter
 - Ambulance transfer to Advanced Medical Post
 - Transport by ambulance or rescue helicopter to the hospital

MEDICAL

GENERAL INFORMATION



- **Additional Information**

- • 75% of the trial are directly accessible via forest path. Along the last 25% of the trial there are a total of 10 rescuers, so that an injured person can leave the steep forest terrain as quickly as possible.
- Mountain rescue and rescuers or nurses are positioned directly along the route (key points) minor injuries (Abrasion...) are treated by the rescuers and nurses/ doctor just after the rock garden
- In order to maintain more flexibility, to ensure the spectators as well as the medical care of the athletes, 1 additional team will be deployed in the car of the mountain rescue consisting of 1 mountain rescuer, 1 paramedic and 1 staff member of the bike rescue

MEDICAL

GENERAL INFORMATION



- **Special Material Equipment for Medical Care**

- Mountain Rescue Service
- Emergency nurse :
 - Medumat for possible ventilation of patients requiring intensive care
 - Philips MRX monitor for monitoring/ reanimation
 - Various emergency medicines
 - Digital radios

Rescue :


- Equipment for possible ventilation of patients requiring intensive care
- Every paramedic always has analogic radios - permanent radio connection
- scoop stretcher, rescue sheet for removal/transfer
- spineboard compatible for direct transfer to the rescue helicopter

 Mercedes-Benz

 UCI

MOUNTAIN BIKE
WORLD CUP

VAL DI SOLE - TRENTO
ITALY

 THANK YOU – GOOD LUCK!



Unity. Passion. Integrity. Excellence.